

*David Shearer*  
*Mike E. Br...*  
*David Shearer*  
*Center Staff*  
**Thank you for your continued support!**  
*David Shearer*  
*Mike E. Br...*  
*David Shearer*  
*Center Staff*

## The Center for Dirt & Gravel Roads



Due to wetlands on both sides, there was a need to install 2 French Mattresses, 155' of underdrain, 3' of road fill and the replacement of cross pipes .



**BEYER AVENUE EXTENSION  
YOUNG TOWNSHIP  
JEFFERSON COUNTY**





*Pennsylvania's Dirt Gravel, and Low Volume Road Maintenance Program provides funding to eliminate stream pollution caused by runoff and sediment from the State's comprehensive network of unpaved and low volume public roads. The Program was enacted into law in April 1997 as Section 9106 of the PA Vehicle Code, with \$5 Million in annual funding for "environmentally sensitive road maintenance" for unpaved roads. The goal of the Program is to create a more environmentally and economically sustainable low volume road network through education, outreach, and project funding. Beginning in 2014-15, a portion of the Program's funding was directed towards paved or sealed low volume roads with 500 vehicles per day or less.*



215 Transportation Research Building  
University Park, Pa 16802  
(866)668-6683  
dirtandgravel@psu.edu



2301 North Cameron Street  
Harrisburg, Pa 17110  
(717)787-2103



400 Market Street, 6th Floor  
Harrisburg, Pa 17101  
(717)783-1337

# DECEMBER 2016

Sunday Monday Tuesday Wednesday Thursday Friday Saturday

Christmas Day	25	26	27	28	29	30	31	New Year's Eve
	18	19	20	21	22	23	24	Christmas Eve
	11	12	13	14	15	16	17	
Pearl Harbor Remembrance Day	4	5	6	7	8	9	10	

NOTES:



*Mountain View Road  
Greene Township  
Pike County*

Construction of a “tear drop” shaped channel outlet. The embankment is built of soil then lined with geotextile and topped with rock. The lip is level to create a spillway. The basin is kept free of rocks for easy sediment removal.

10/17/2014

## *The Center for Dirt & Gravel Road Studies*

# 2016



# Project Calendar

**201 Transportation Research Building, University Park, Pa 16802**

**(866)668-6683**

**[www.dirtandgravelroads.org](http://www.dirtandgravelroads.org)**

**[dirtandgravel@psu.edu](mailto:dirtandgravel@psu.edu)**



						Cyber Monday	
				30	29	28	27
			Thanksgiving Day				
		Black Friday					
	26	25	24	23	22	21	20
	19	18	17	16	15	14	13
		Veteran's Day			General Election Day		Daylight Savings
	12	11	10	9	8	7	6
	5	4	3	2	1		

NOTES:

Sunday      Monday      Tuesday      Wednesday      Thursday      Friday      Saturday

# NOVEMBER 2016

2,000 linear feet of DSA  
(Driving Surface Aggregate) was  
placed on "Old Town Road" from  
Valley Quarries in  
Shippensburg, PA.

BEFORE

AFTER

Old Town Road  
South Middleton Township  
Cumberland County





Callear Road  
Litchfield Township  
Bradford County

The road base and profile were improved, ditches were stabilized and vegetated, an off-right-way level spreader was installed, and DSA was placed.

• 2nd Place •

# JANUARY 2016

	Sunday	Monday	Tuesday	Wednesday	Thursday	Friday	Saturday
NOTES:						1	2
						New Year's Day	
	3	4	5	6	7	8	9
	10	11	12	13	14	15	16
	17	18	19	20	21	22	23
		Martin Luther King Jr. Birthday					
	24/31	25	26	27	28	29	30



# OCTOBER 2016

	Sunday	Monday	Tuesday	Wednesday	Thursday	Friday	Saturday	NOTES:
2	3	4	5	6	7	8	1	
9	10	11	12	13	14	15		
	Columbus Day							
16	17	18	19	20	21	22		
	Boss's Day							
23	24	25	26	27	28	29		
30	31							
	Halloween							

NOTES:



## Driving Surface Aggregate







Due to continuous erosion of the west bank, multi-log vanes were installed to move the flow of the creek back to the center of the channel while naturally removing the gravel bar and stabilizing the stream bank.

# FEBRUARY 2016

NOTES:

	Sunday	Monday	Tuesday	Wednesday	Thursday	Friday	Saturday
NOTES:		1	2	3	4	5	6
			Groundhog's Day				
	7	8	9	10	11	12	13
						Lincoln's Birthday	Valentine's Day
	14	15	16	17	18	19	20
		President's Day					
	21	22	23	24	25	26	27
	28	29					



# SEPTEMBER 2016

Sunday							
Monday							
Tuesday							
Wednesday							
Thursday							
Friday							
Saturday							
NOTES:							





Snyder County

Carbon County

Washington County

MARCH 2016

Sunday	Monday	Tuesday	Wednesday	Thursday	Friday	Saturday	NOTES:
		1	2	3	4	5	
6	7	8	9	10	11	12	
13	14	15	16	17	18	19	
Daylight Savings				St. Patrick's Day			
20	21	22	23	24	25	26	
Easter					Good Friday		
27	28	29	30	31			



Trapezoidal Ditch Installation. Berm removal, followed by DSA placement.

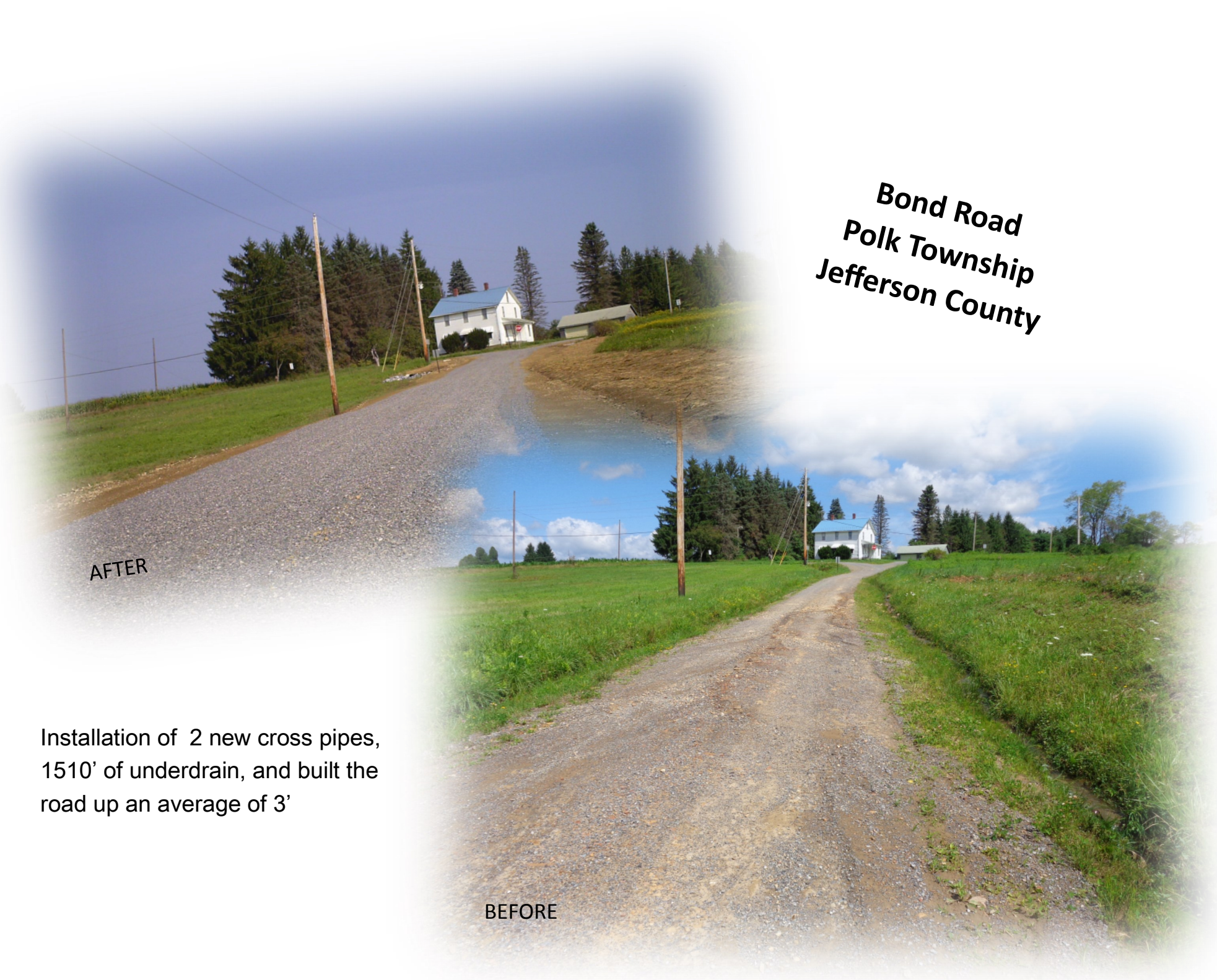
**Mountain View Road  
Greene Township  
Pike County**



# AUGUST 2016

[illegible]





**Bond Road  
Polk Township  
Jefferson County**

AFTER

Installation of 2 new cross pipes,  
1510’ of underdrain, and built the  
road up an average of 3’

BEFORE

# APRIL 2016

<i>Sunday</i>	<i>Monday</i>	<i>Tuesday</i>	<i>Wednesday</i>	<i>Thursday</i>	<i>Friday</i>	<i>Saturday</i>	NOTES:
					1	2	
					April Fool's Day		
3	4	5	6	7	8	9	
10	11	12	13	14	15	16	
17	18	19	20	21	22	23	
					Earth Day		
24	25	26	27	28	29	30	



## A photograph of a drainage ditch. A stone wall, constructed from large, grey, irregularly shaped rocks, runs across the middle of the frame. Behind the wall, a corrugated metal culvert is visible, partially obscured by the stones. To the left of the wall, another corrugated metal culvert is visible, with a small, dark, circular opening in the ground in front of it. The ground is covered with dry leaves and twigs. The text "VENANGO COUNTY" is written diagonally across the middle of the image. The word "Drainage" is written vertically on the right side of the image.

## Drainage

VENANGO COUNTY

[illegible]





2015 Annual Maintenance  
Workshop Field Trips

MAY 2016

	Sunday	Monday	Tuesday	Wednesday	Thursday	Friday	Saturday
NOTES:							
	1	2	3	4	5	6	7
	8	9	10	11	12	13	14
	Mother's Day						
	15	16	17	18	19	20	21
	22	23	24	25	26	27	28
	29	30	31				
		Memorial Day					



**JUNE 2016**

# 2015 Annual Maintenance Workshop



Sunday	Monday	Tuesday	Wednesday	Thursday	Friday	Saturday
			1	2	3	4
5	6	7	8	9	10	11
12	13	14	15	16	17	18
		Flag Day				
19	20	21	22	23	24	25
26	27	28	29	30		
Father's Day						