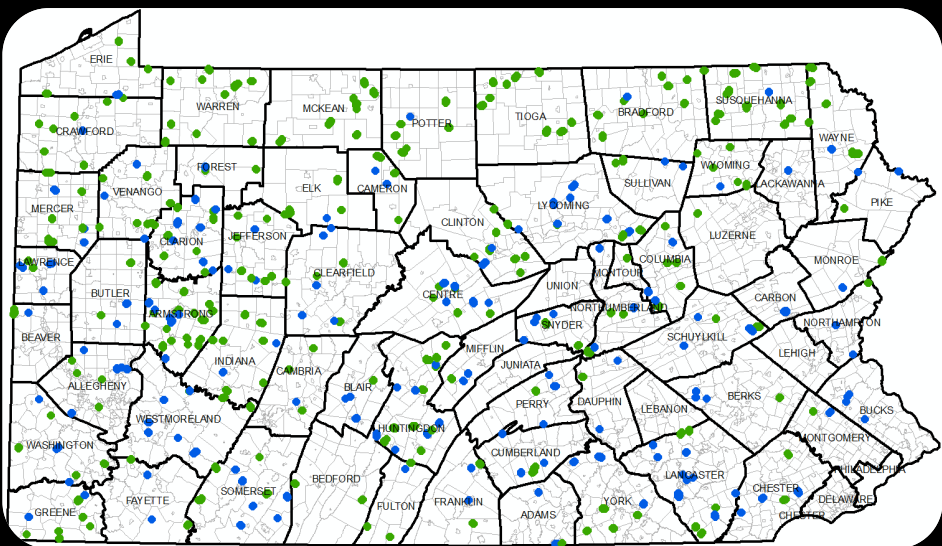


# DGLVR Webinar

## GIS Analysis for CDs

3/7/2019

Starts at 9am



**We would like to show actual data today. Are there any (preferably small Program) counties willing to volunteer the use of their data for this webinar? (volunteer using chat or question box)**

If you are reading this, then you are successfully seeing the webinar video. Webinar audio should be automatic through your computer, and options can be accessed in the “audio options” button on the bottom left. If you are having audio issues, or are in a location where listening via phone is preferable, audio is also available on the CDGRS conference line at:

866-823-7699.

For technical assistance, call: 814-865-5355

Q&A

**You** asked: 02:25 PM

Can you think of an example question?

**Steven Michael Bloser** answered: 02:25 PM

No, I can't!

Please input your question...

Send Anonymously

Send

*Note you can ask a question anonymously*

**Q&A**

Audio Settings ^



Chat



Raise Hand



Q&A

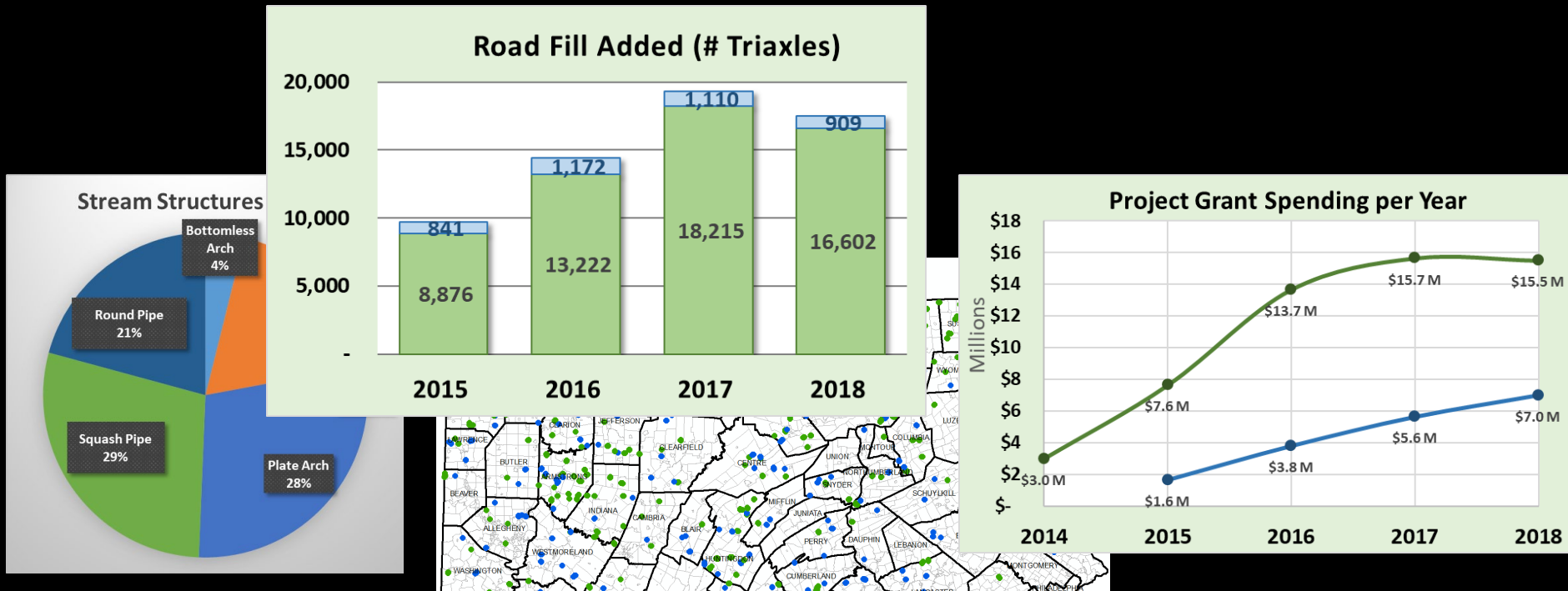
Leave Meeting

For audio via phone: 866-823-7699  
For technical assistance: 814-865-5355

Slide # 2

## Purpose:

- Demonstrate some of the data mining and analysis potential that already exists in your GIS
- Help you to pull useful data out for your county, district board, or QAB





Annual Summary Report

Funding Source: **Dirt and Gravel** | County:

Yearly Summary Report | Project Totals (2015 +)

Year	Contracted Count	Contracted Total	Completed Count
2016	0	0.00	1
2015	3	59,943.00	2
2014	0	0.00	3
2013	0	0.00	1
2012	0	0.00	2
2011	0	0.00	2
2010	0	0.00	3
2009	0	0.00	2
2008	0	0.00	3
2007	0	0.00	3
2006	0	0.00	1

ASR Overview (2016/2017)

Total Committed: \$ 680,012.68

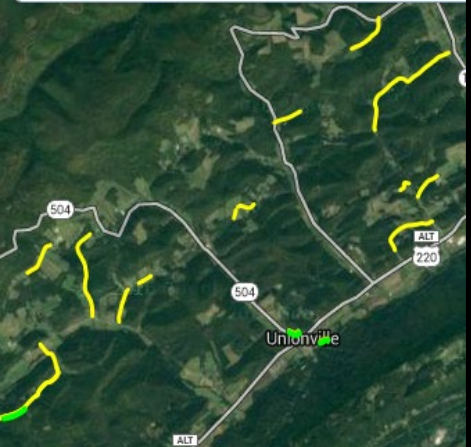
Spending Req.: \$ 568,905.00

Difference: \$ **111,107.68**

All Funds  
 Costs and  
 ASR Cor

- **Internal to GIS**  
*need GIS account to access*

- **Data Exported to Excel**



**Audio also available via phone: 866-823-7699**  
For assistance, call: 814-865-5355

## **Please note:**

- This is a webinar, not a training.
- Don't try to follow along, purpose is to provide an overview.
- Will be recorded so you can view again if needed.

**Are there any counties willing to volunteer the use of their data for the webinar? (use chat or question box)**