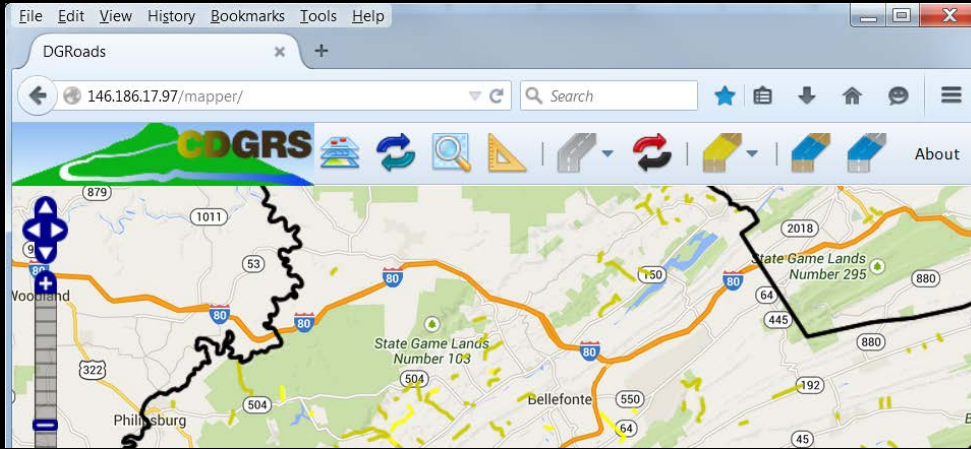
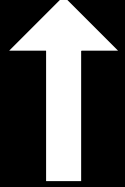
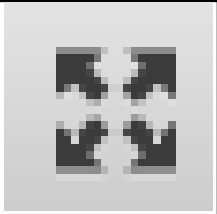


DGRoads GIS Update & Demo



Toggle Fullscreen mode with this button above



7/25/15

Starts at 10am

Use Chat box to ask Questions

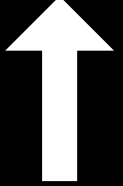
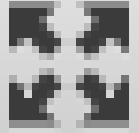


If you are reading this, then you are successfully seeing the webinar video. In addition to audio on the webinar, we have opened a phone conference line to allow attendees to listen and ask questions directly: **866-823-7699**. Please use either the webinar audio or conference line, but not both (will produce feedback).

Audio also available via phone: 866-823-7699

For assistance, call: 814-865-5355

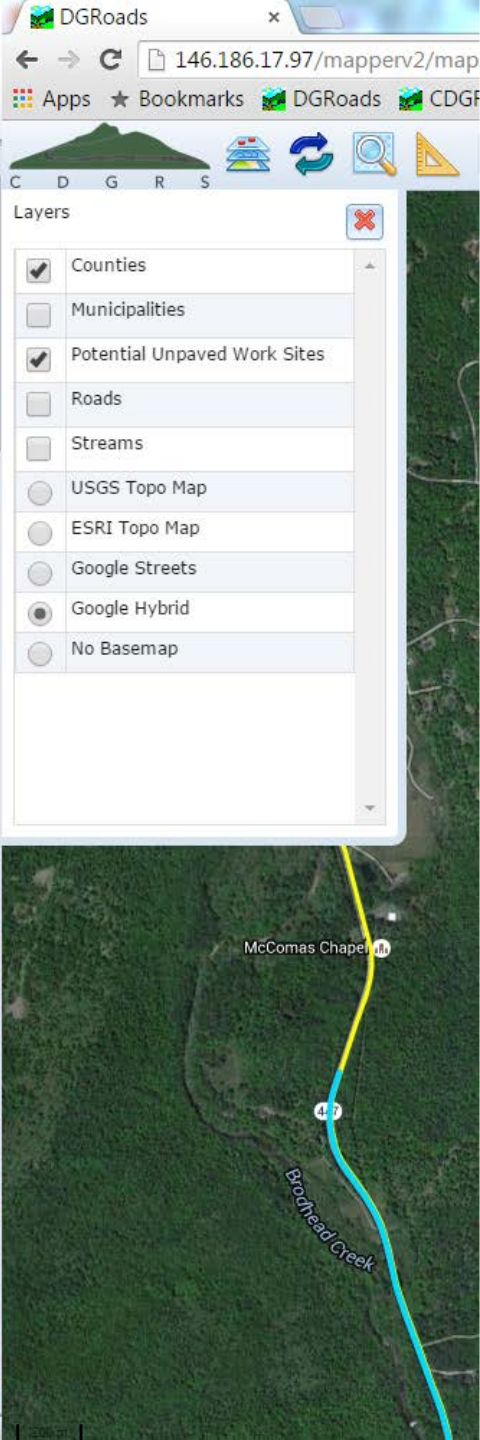
**Toggle Fullscreen
mode with this button
above**



**Use Chat box to
ask Questions**

Participant phone lines will
be muted until after initial
presentation

Audio also available via phone: 866-823-7699
For assistance, call: 814-865-5355



DGRoads GIS Update

7/24/15

- **Overview**
- What's the holdup?
- Website and Logins
- Current Status
- Training and Implementation
- Demo

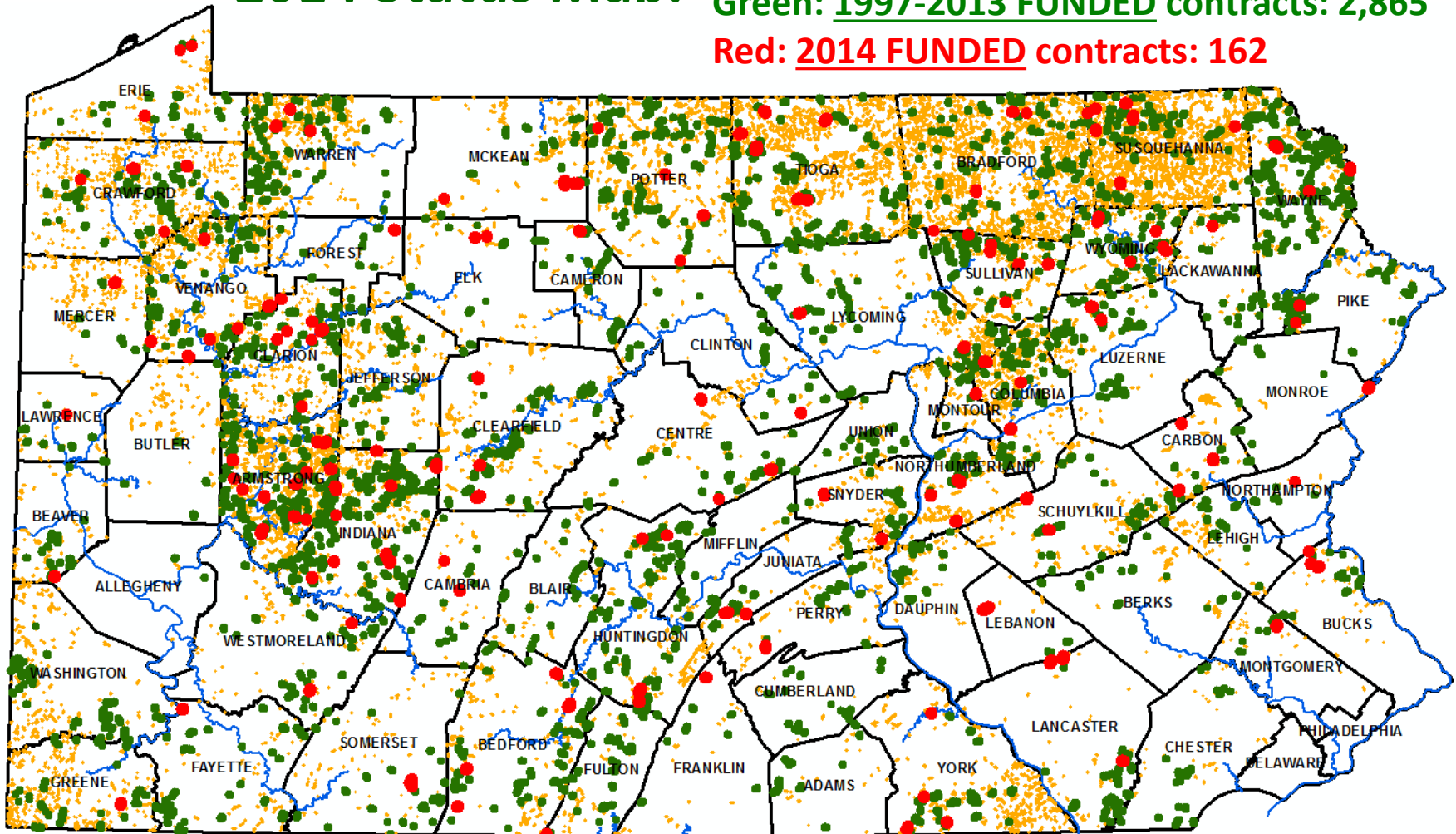
- **How does DGLVRP use GIS?**

2014 Status Map:

Yellow: Unfunded identified worksites: 14,160

Green: 1997-2013 FUNDED contracts: 2,865

Red: 2014 FUNDED contracts: 162



Old System

– Local Install

- Permission issues
- Outdated data
- Data on CD harddrive
- No remote access
- Desktop only

– No overlapping sites

– No LVR support

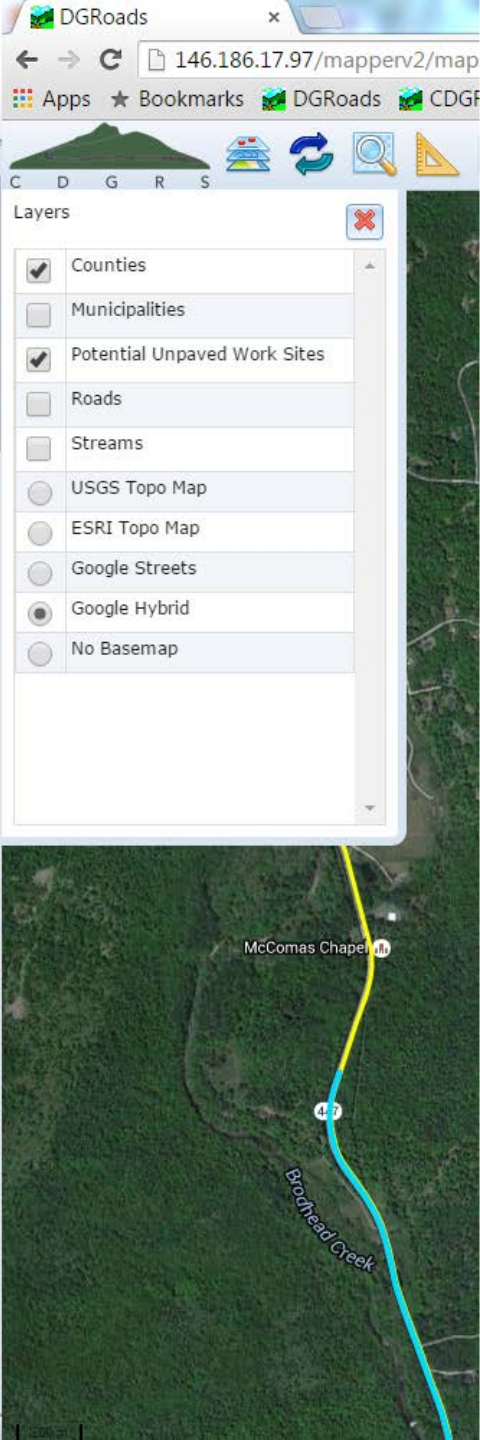
New System

– Web Based

- Nothing to install
- Live updates
- Data on server
- Access from anywhere
- Offline and tablet mode

– Can overlap sites

– Includes LVRs



DGRoads GIS Update

7/24/15

- Overview
- **What's the holdup?**
- Website and Logins
- Current Status
- Training and Implementation
- Demo

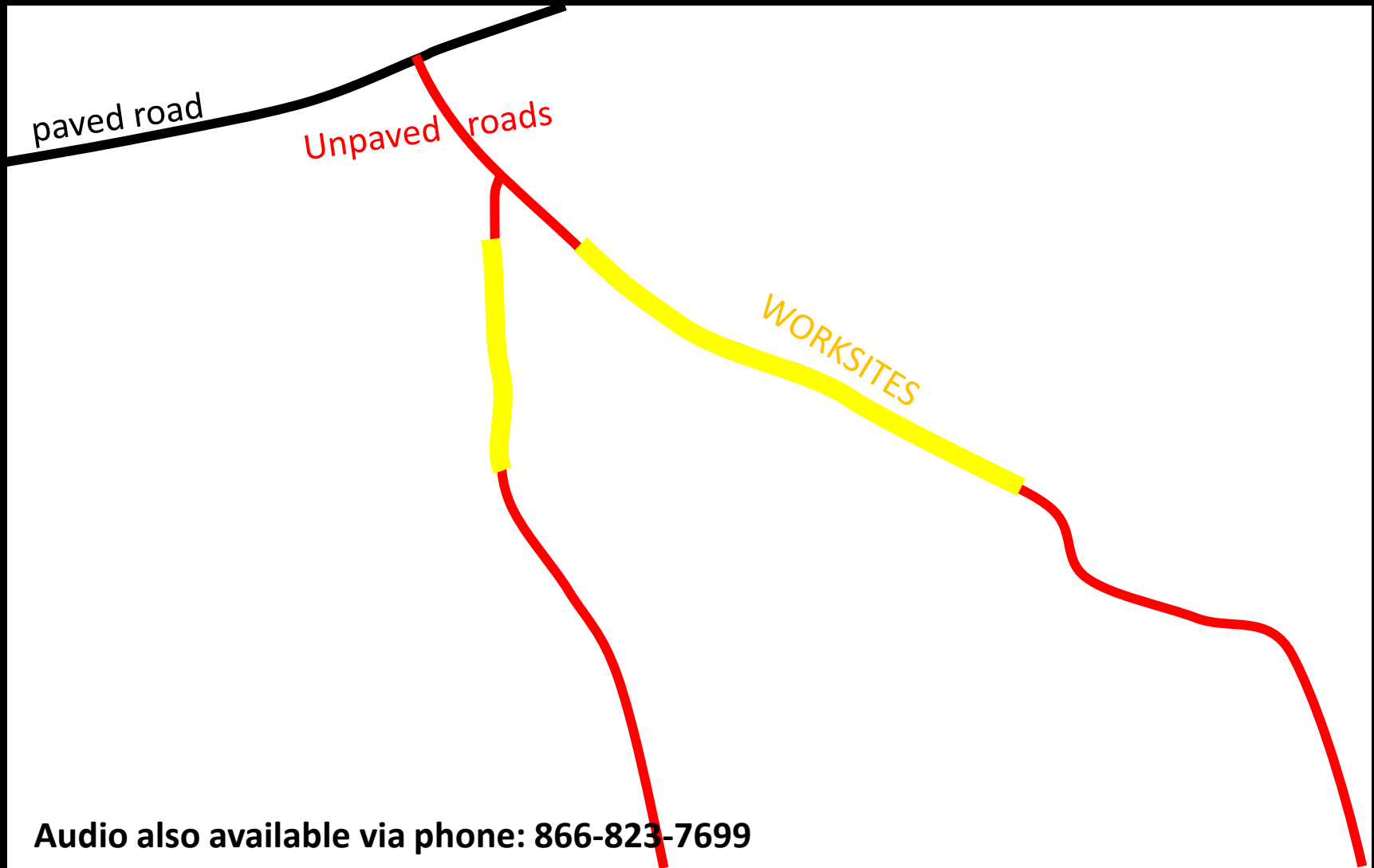
What was the Delay:

- Not programming, but data related:
- 15,000+ miles of unpaved road
and 16,000+ identified pollution worksites

All unpaved roads and worksites established from a PennDOT layer from min 1990s.

What was the Delay:

- Not programming, but data related:



Audio also available via phone: 866-823-7699

What was the Delay:

- Not programming, but data related:



What was the Delay:

- Not programming, but data related:



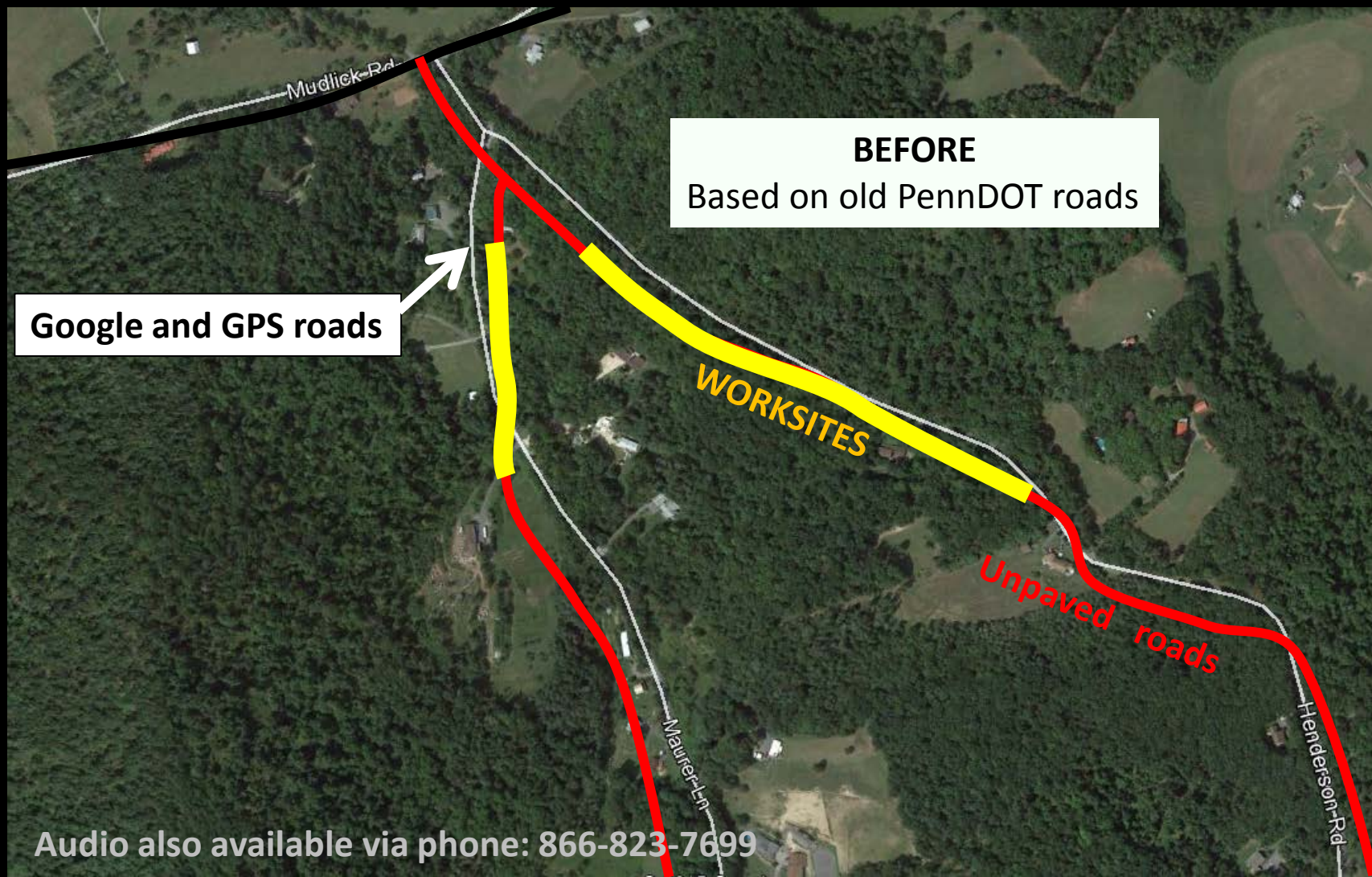
What was the Delay:

– Not programming, but data related:

- Custom program had to be developed to facilitate correction.
- Unpaved roads and worksites had to be MANUALLY corrected.
- Two interns hired to do the corrections.

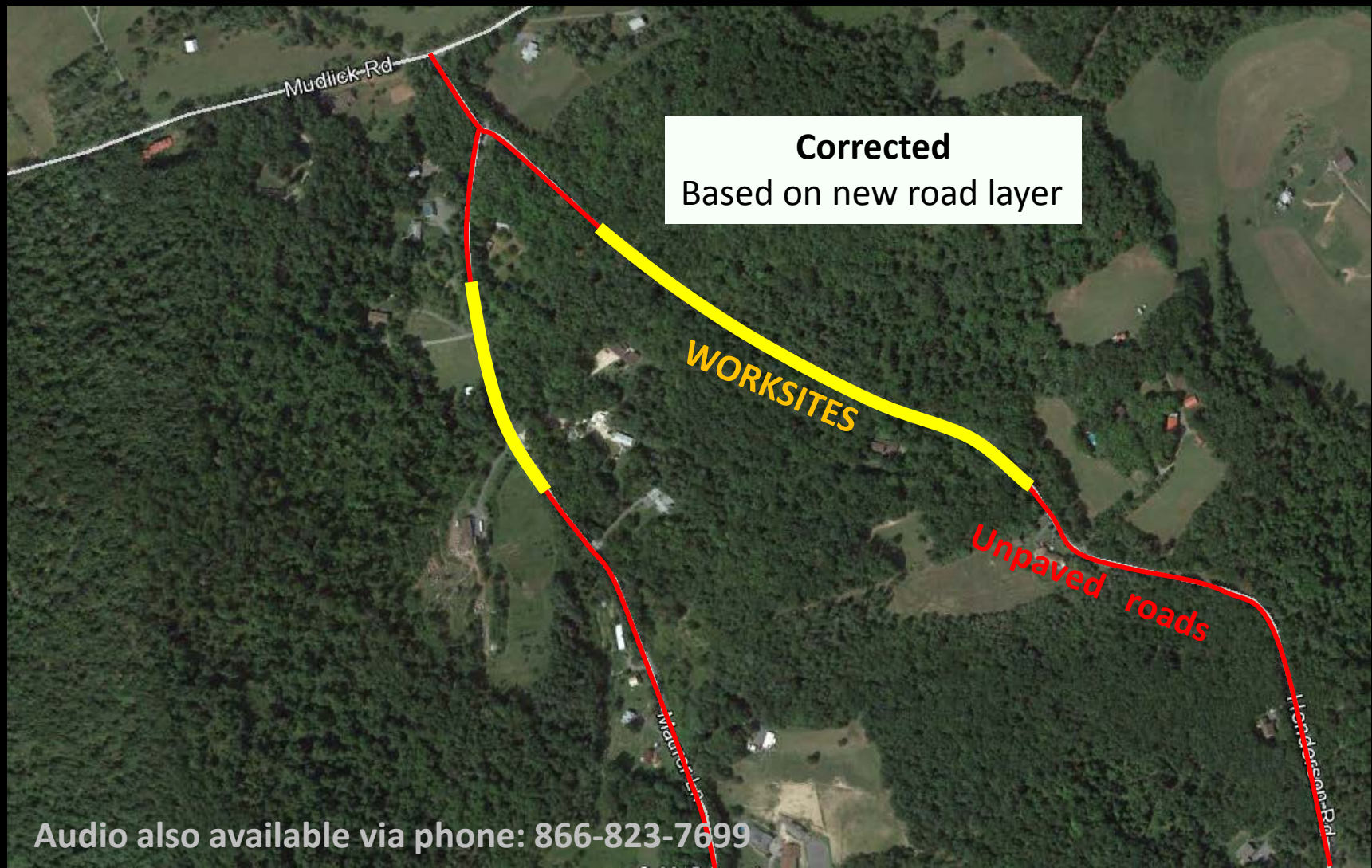
What was the Delay:

- Not programming, but data related:



What was the Delay:

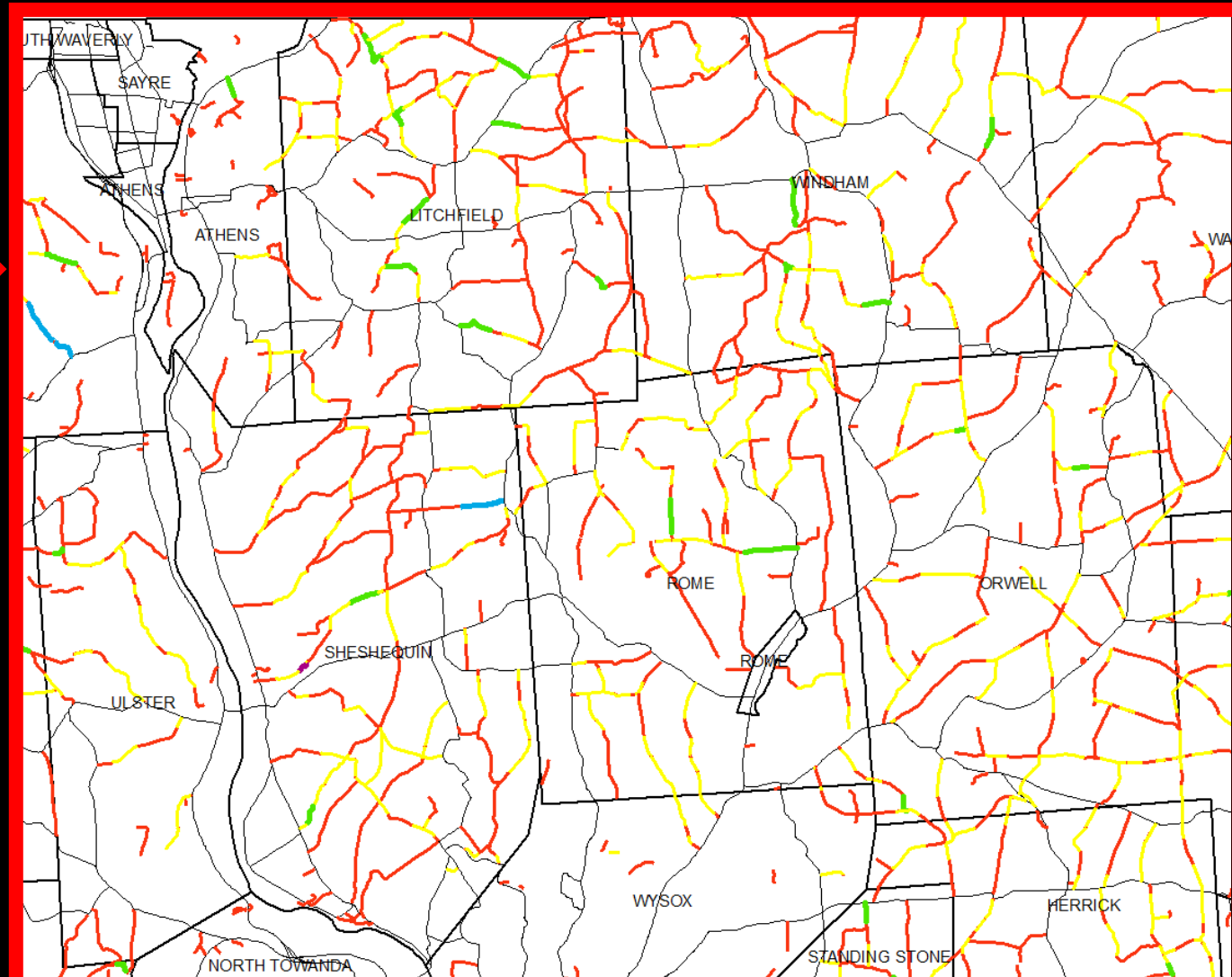
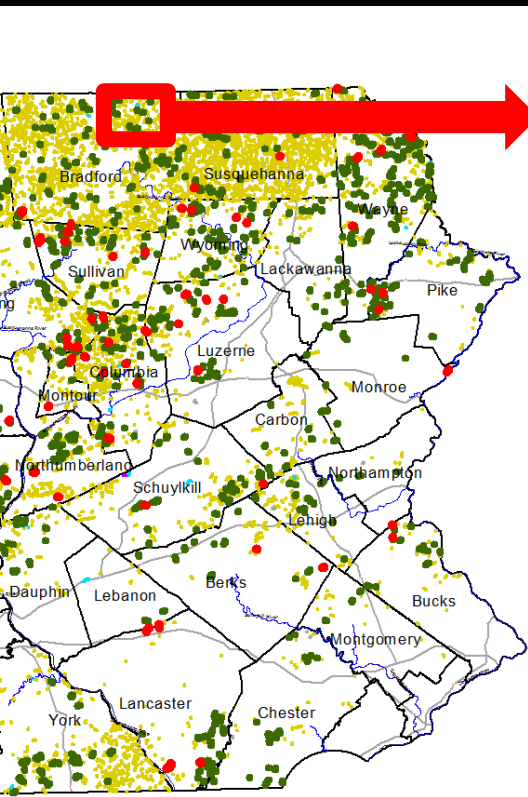
- Not programming, but data related:



Audio also available via phone: 866-823-7699

Looks easy, right?

– One corner of Bradford County

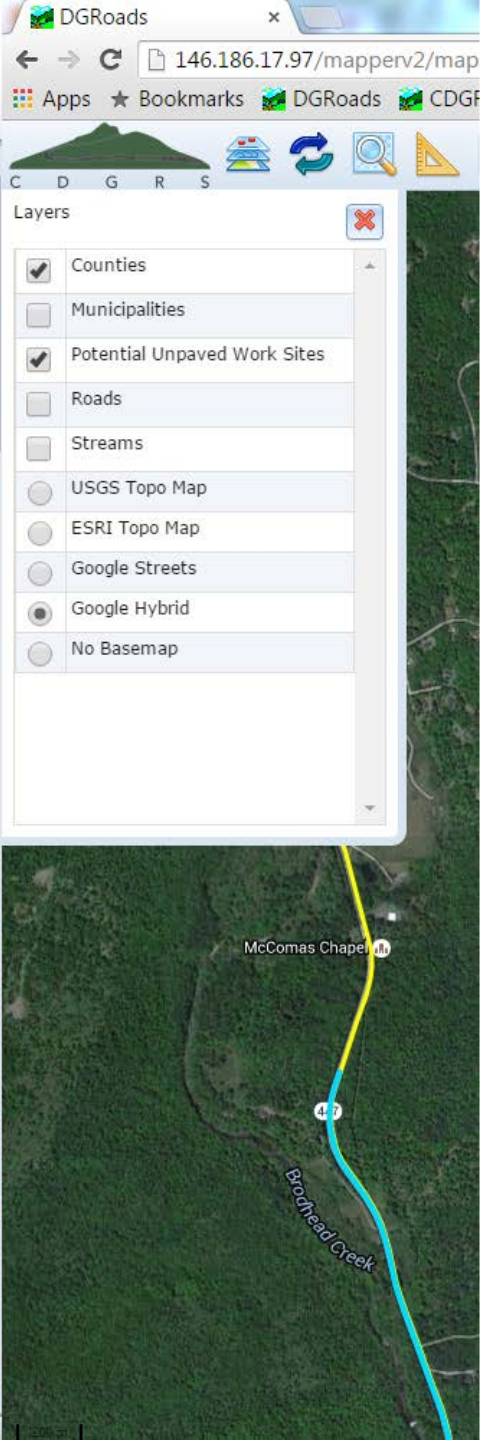


Corrections Status:

- Unpaved roads 100% corrected
- Worksites 90% corrected

Corrections Status:

- Unpaved roads 100% corrected
- Worksites 90% corrected
- Thank God for interns...



DGRoads GIS Update

7/24/15

- Overview
- What's the holdup?
- **Website and Logins**
- Current Status
- Training and Implementation
- Demo

- www.dirtandgravelroads.org
- New website released in June

The screenshot shows the homepage of the Penn State Center for Dirt and Gravel Road Studies. The header features the Penn State logo and the center's name. A navigation menu includes Home, PA Program Resources, General Resources, Education / Training, News & Events, and Center. A main content area highlights a feature titled "Better Roads, Cleaner Streams" with a photo of a gravel road and a stream. Below this are three columns: "What's New" with updates on DSA suppliers, the new website, and an online GIS update; "Upcoming Events" listing a PACD/SCC meeting, a GIS webinar, and a TRB LVR conference; and "Quick Links" for GIS Application, ESM Course Registration, and Technical Assistance.

PENNSSTATE
1855

CENTER FOR DIRT AND GRAVEL ROAD STUDIES

Login

C D G R S

HOME PA PROGRAM RESOURCES GENERAL RESOURCES EDUCATION / TRAINING NEWS & EVENTS CENTER

Better Roads, Cleaner Streams

PA's Dirt Gravel and Low Volume Roads (DGLVR) Program provides local road-owning entities with grant funding for road and environmental improvements on unpaved and low-volume paved roads.

[More Info](#)

● ● ● ● ●

WHAT'S NEW

Updated DSA Known Suppliers
An updated list of quarries and suppliers have been compiled from...

New Website Online
We are pleased to announce that the Center's new website. Major changes and...

DGRoads Online GIS Update
The Center continues to work on the online...


UPCOMING EVENTS


JUL 8 PACD/SCC Meeting
The Center will be present at the PACD/SCC Joint Annual Conference...


JUL 10 Webinar: GIS Update
Repeat of update given at the July 8 SCC meeting for those who could...

JUL 12 TRB LVR Conference
The Transportation Research Board's (TRB) Low Volume Road Conference...

QUICK LINKS

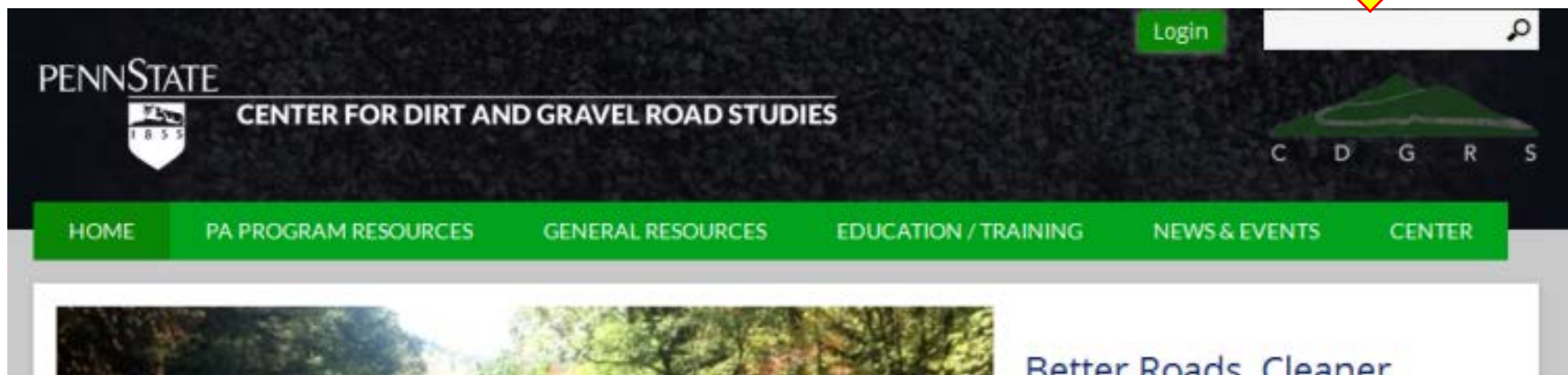
[GIS Application](#) 

[ESM Course Registration](#) 

[Technical Assistance](#) 

- www.dirtandgravelroads.org
- New website released in June
 - Site modernization of design/layout.
 - Mobile friendly.
 - No longer “separate” Center and Program pages
 - Complete update of site content
 - Inclusion of pages specific to each District.
 - **Provision for secure GIS login.**

Functional, but not yet active



Logins

- Public:
 - Statewide viewer only
 - Limited data

Logins

- Public:

- Statewide viewer only
- Limited data

- Conservation District

- Access to edit data within your county
- Different levels of access: (admin only, projects only, all)
- Will receive login info at GIS trainings.

Logins

- Public:

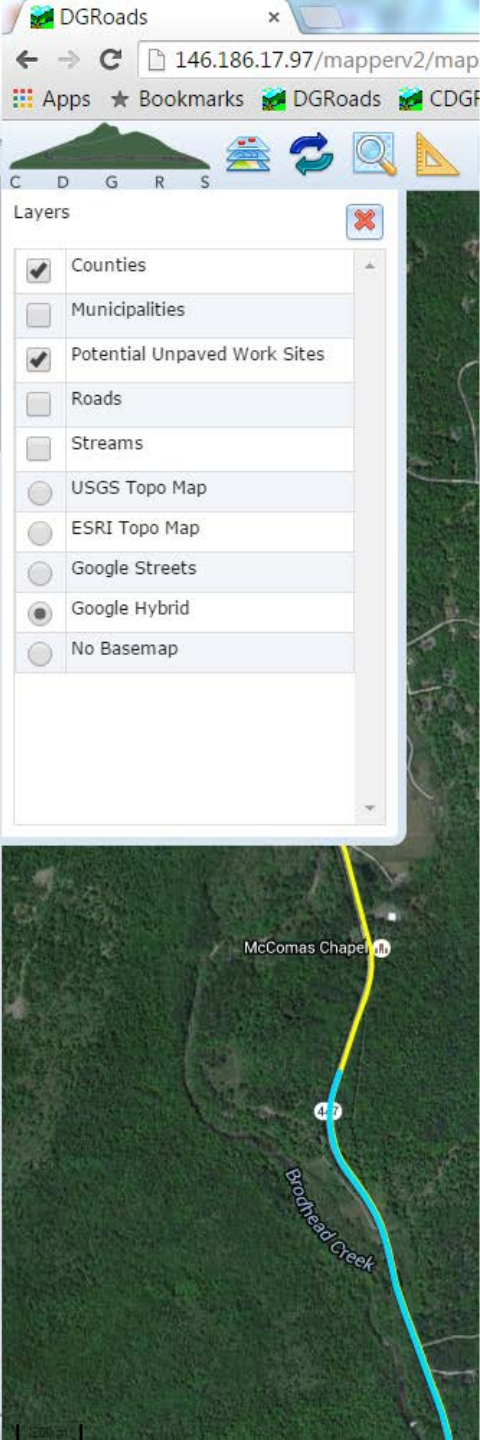
- Statewide viewer only
- Limited data

- Conservation District

- Access to edit data within your county
- Different levels of access: (admin only, projects only, all)
- Will receive login info at GIS trainings.

- State / Administrative

- Access to edit statewide data



DGRoads GIS Update

7/24/15

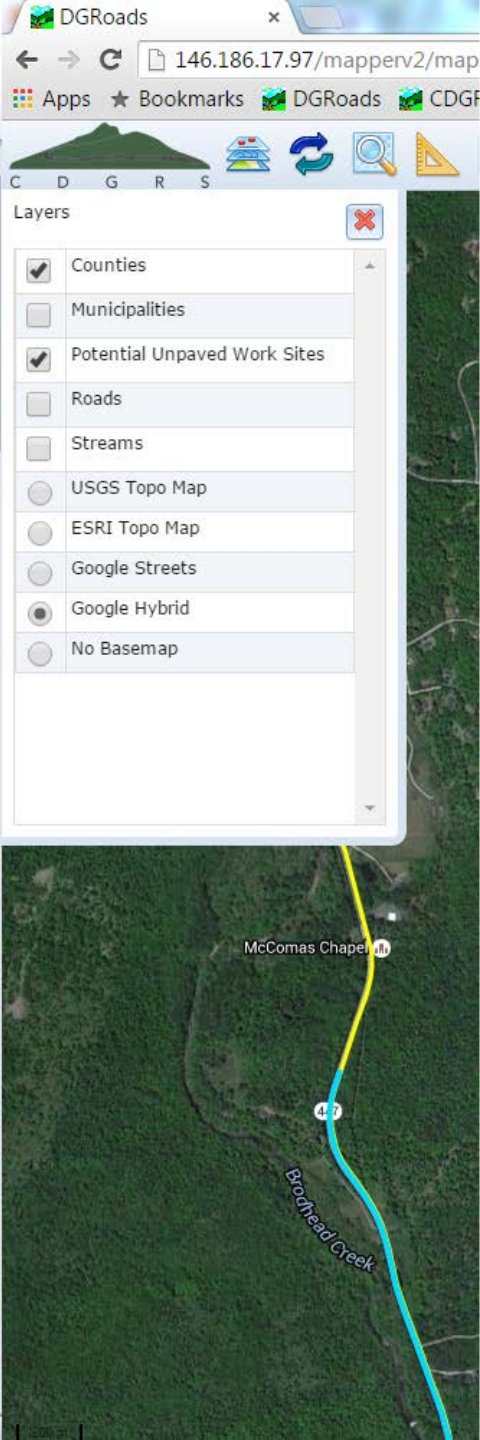
- Overview
- What's the holdup?
- Website and Logins
- **Current Status**
- Training and Implementation
- Demo

Overall Status

- Data Corrections 95% complete.
- Worksite functionality complete.
- Current work shifted to data entry forms.
- GIS “test group” in regular contact.

Current Timeline

- **Completed basic functionality (D&G + LVR worksite functions and data entry) by workshop (9/29).**
- **Trainings soon after workshop (potentially one before).**
- **Continue work on reporting, advanced features, and “bells and whistles”.**



DGRoads GIS Update

7/24/15

- Overview
- What's the holdup?
- Website and Logins
- Current Status
- **Training and Implementation**
- Demo

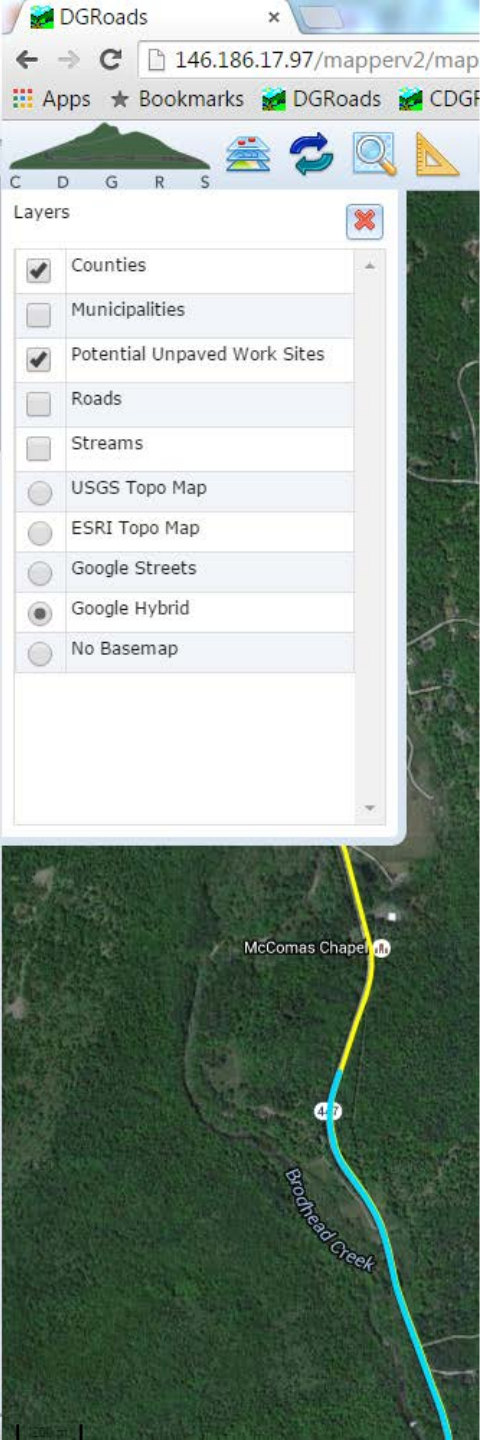
Trainings: (preliminary)

- Likely October/November (maybe one earlier)
- Likely several around the state.
- Likely BYO laptop (with a few loaners)

Trainings: (preliminary)

1-day sessions, 9am to 3pm

- **~9am to noon:** GIS Walkthrough and Training with “dummy data”
- **Lunch**
- **~1pm-3pm:** Enter your own sites in your own county (bring at least 5 of your projects to enter while we provide assistance)



DGRoads GIS Update

7/24/15

- Overview
- What's the holdup?
- Website and Logins
- Current Status
- Training and Implementation
- **Demo**

Old System

One of the biggest differences in the new system (aside from LVR functionality and being online) is the ability to overlay worksites in successive years. This required a new approach...

DGRoads GIS Update



Audio also available via phone: 866-823-7699

DGRoads GIS Update

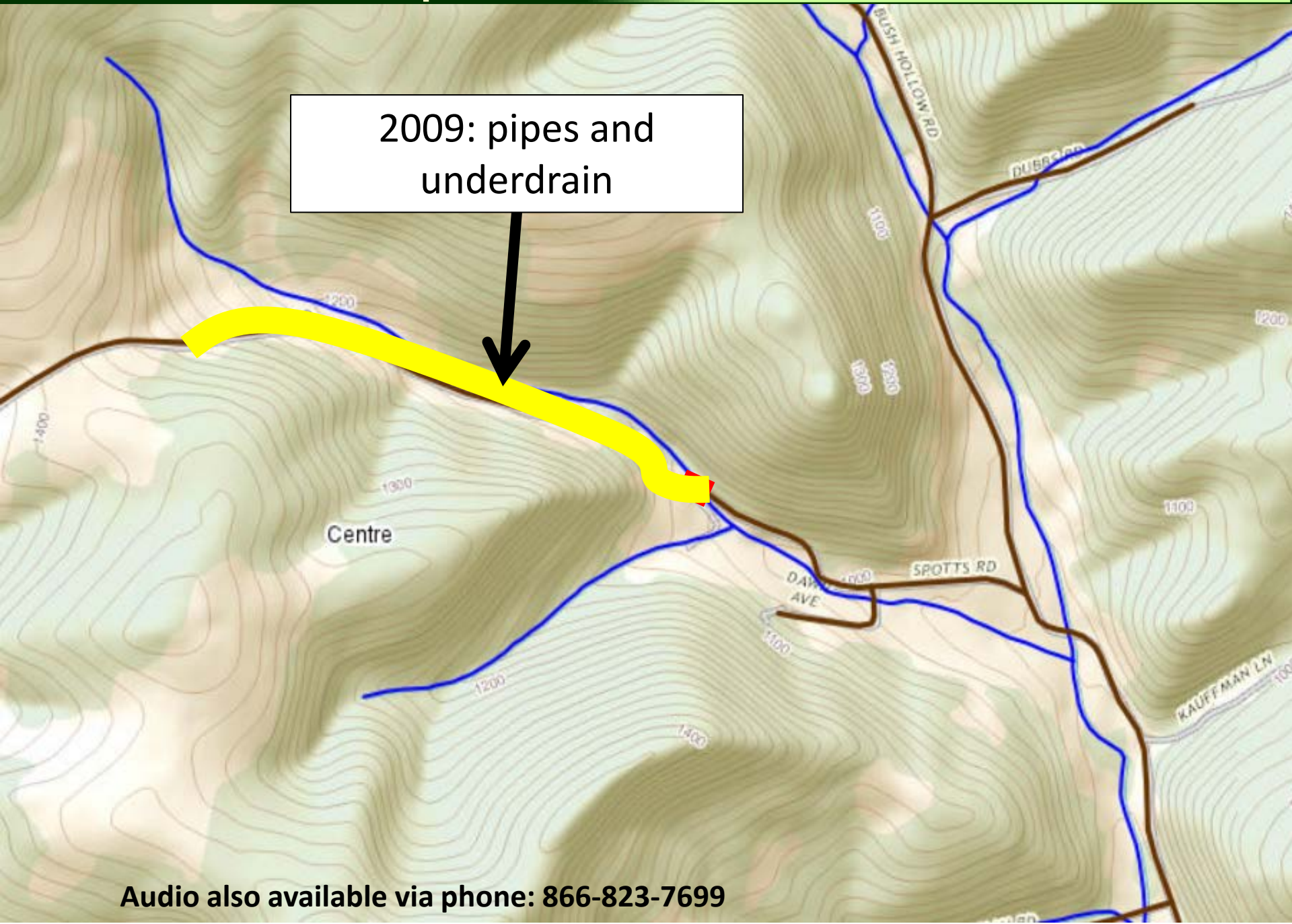


2004: stream crossing replacement

Audio also available via phone: 866-823-7699

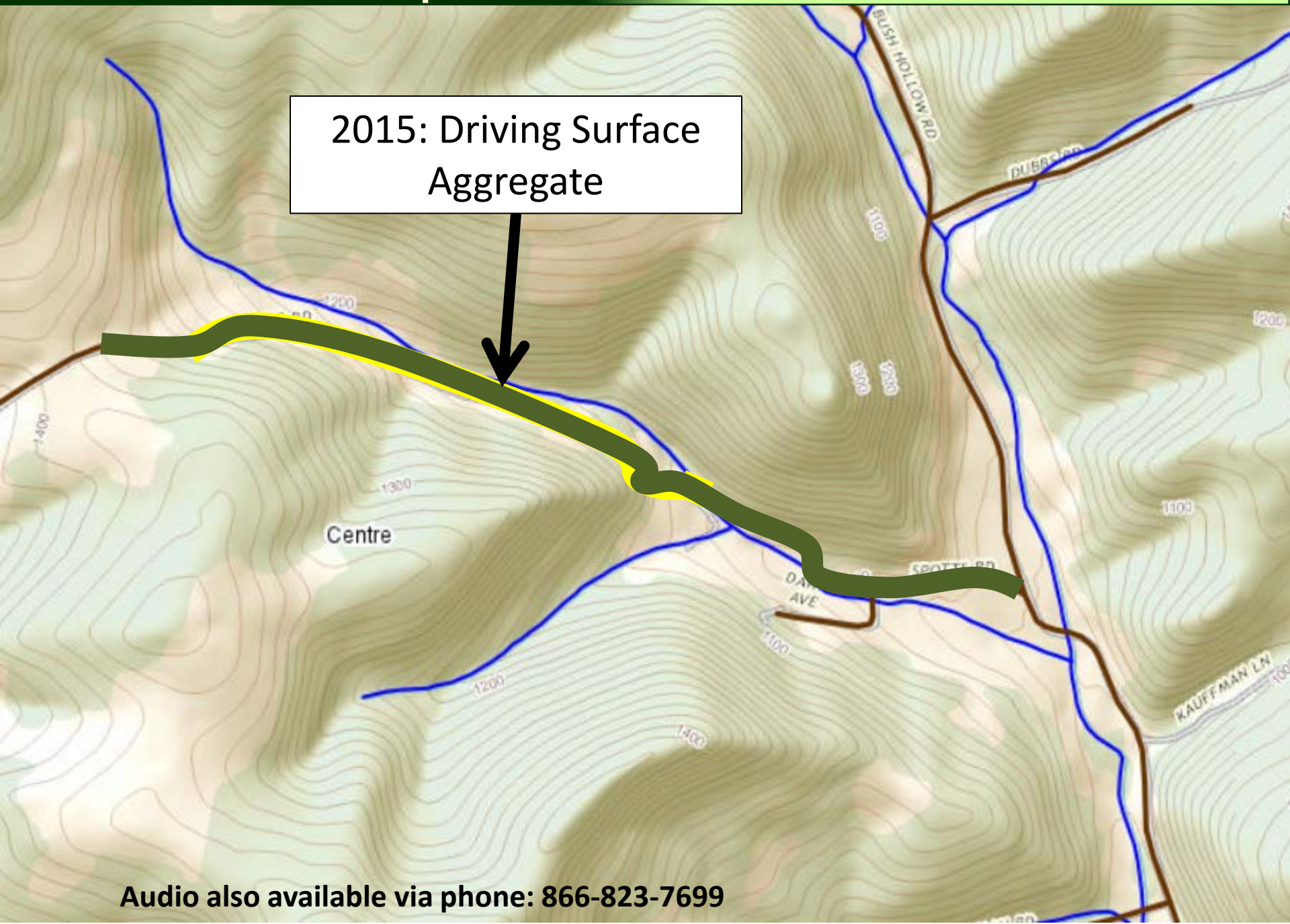
DGRoads GIS Update

2009: pipes and
underdrain



Audio also available via phone: 866-823-7699

2015: Driving Surface
Aggregate



Old System

Roads ■



Old System

Unpaved Roads 

Roads 

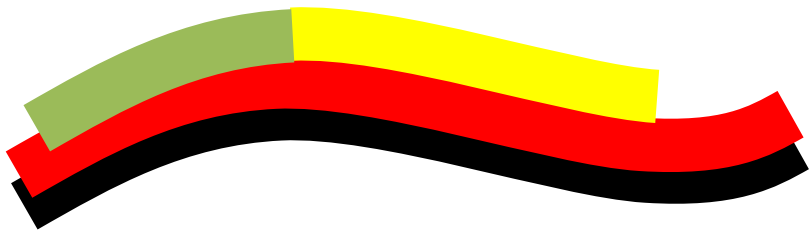


Old System

Worksites 

Unpaved Roads 

Roads 



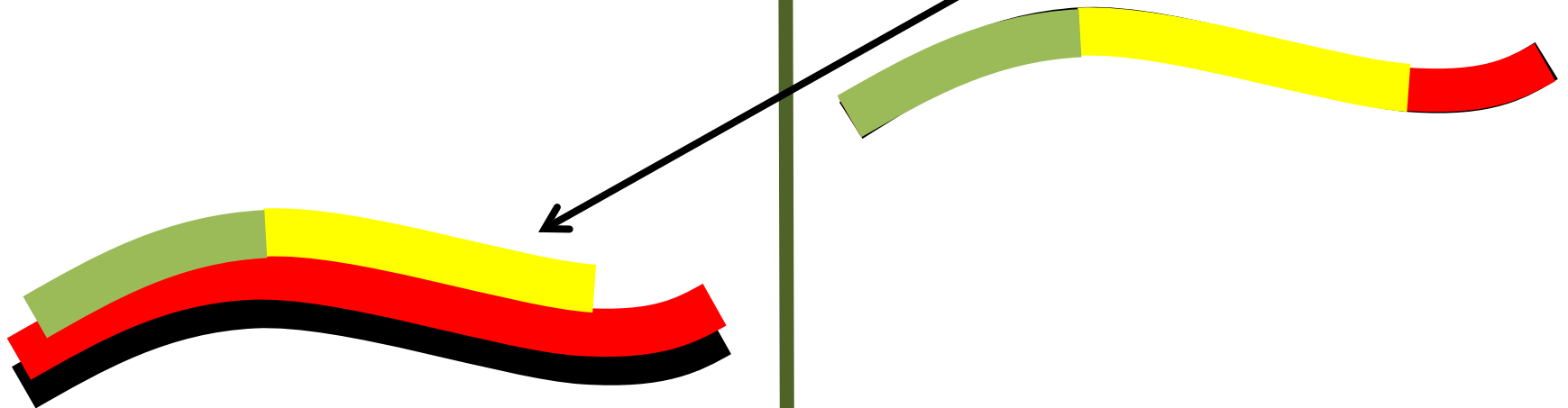
Old System

Worksites 

Unpaved Roads 

Roads 

Note in reality shapes would overlap completely, expanded here for clarification



Old System

Worksites 

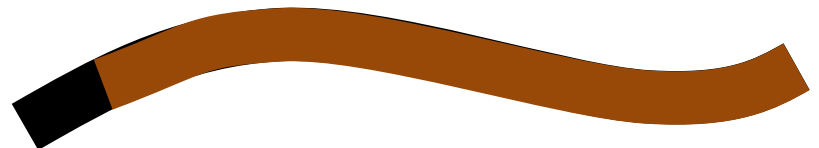
Unpaved Roads 

Roads 



New System

Roads (with unpaved/LVR attributes) 

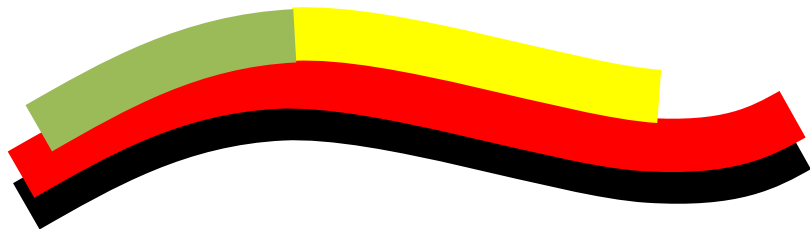


Old System

Worksites 

Unpaved Roads 

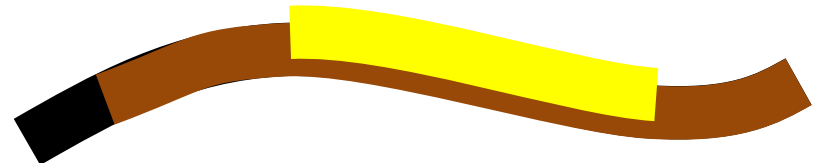
Roads 



New System

Potential Worksites 

Roads (with unpaved/LVR attributes) 

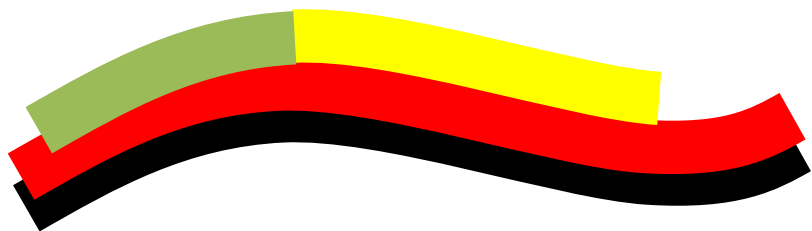


Old System

Worksites 

Unpaved Roads 

Roads 



New System

Active/Completed
Worksites (by year) 

Potential Worksites 

Roads (with unpaved/LVR
attributes) 



**LVR Worksites
will work the
same way.**

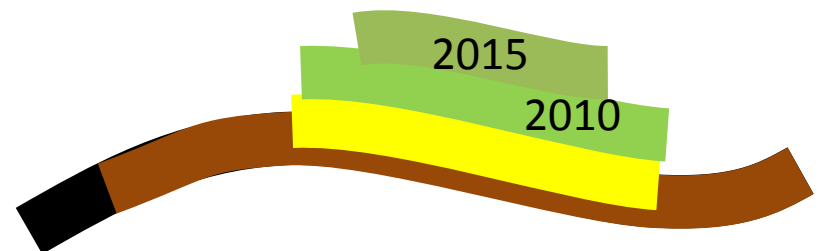
**In fact, one of our
problems is going to be...**

New System

Active/Completed
Worksites (by year) 

Potential Worksites 

Roads (with unpaved/LVR
attributes) 



Colors:

**Running out of
useable colors for
all the layers!**

