

# DGLVR Webinar

## Unpaved Road Assessment Update and Perspective

5/5/20

Starts at 9am

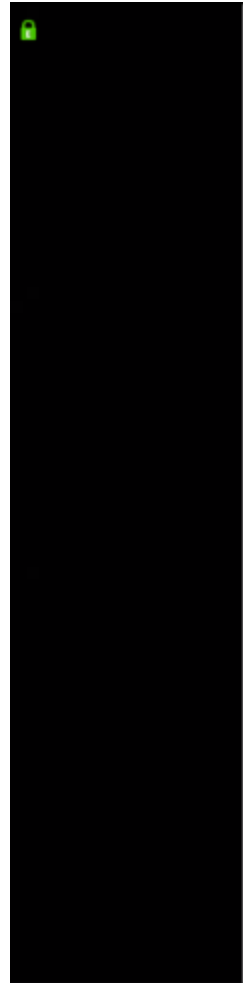
If you are reading this, then you are successfully seeing the webinar video. Webinar audio should be automatic through your computer, and options can be accessed in the “audio options” button on the bottom left. If your computer audio is not working, you can listen on your phone by dialing 646-876-9923.



Audio via Phone: 646-876-9923



*Note you can ask a question anonymously*



Audio Settings ^ Chat Raise Hand **Q&A** Leave Meeting

Audio via Phone: 646-876-9923

Slide # 2



**Purpose:** share update and allow discussion on unpaved road assessments

### **Agenda:**

- **Assessment Overview and Resources**
- Assessment Status
- Assessing from Quarantine: lessons from Juniata County

## Assessments

- Driving Public Unpaved Roads
  - Verifying “unpaved” status
  - Identifying area of stream impact
- Assessments were done in 2000 and 2008, various levels of completeness.
- 19,000+ miles of unpaved road and 7,000+ miles of worksites statewide

## Assessments

- Done in DGLVR GIS system
- Miles of unpaved road and worksites are factors in DnG District Allocations
- Have until June 15<sup>th</sup> to update data before FY 2020-21 CD allocations are run (can continue assessing)

## Assessments

- Resources

- [www.dirtandgravelroad.org](http://www.dirtandgravelroad.org) – education – assessment
- Assessment Q&A
- Evaluation forms
- Assessment picture guide
- Recorded training of “virtual assessment”



**Purpose:** share update and allow discussion on unpaved road assessments

**Agenda:**

- Assessment Overview and Resources
- **Assessment Status**
- Assessing from Quarantine: lessons from Juniata County

## Assessment Status: 6/2019 through 4/2020

### Unpaved Roads

- 6/2019: 19,098 miles

### Worksites

- 6/2019: 7,261 miles



## Assessment Status: 6/2019 through 4/2020

### Unpaved Roads

- 6/2019: 19,098 miles
- 4/2020: 18,874 miles
- **Loss of 224 miles, or 1%**

### Worksites

- 6/2019: 7,261 miles
- 4/2020: 7,797 miles
- **Gain of 536 miles, or 7%**

# DGLVR Unpaved Road Assessment Update

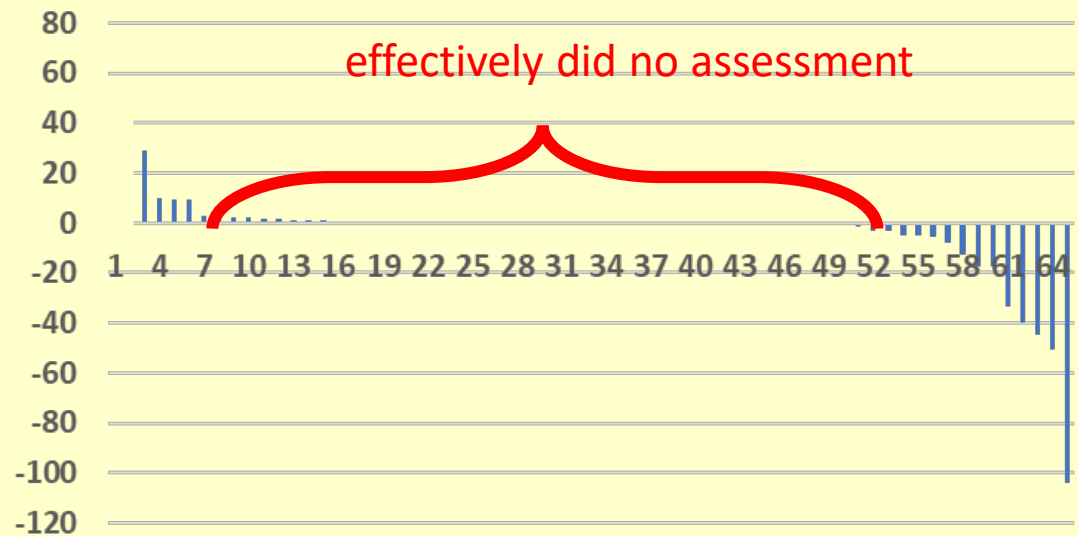
## Assessment Status:

6/2019  
through  
4/2020

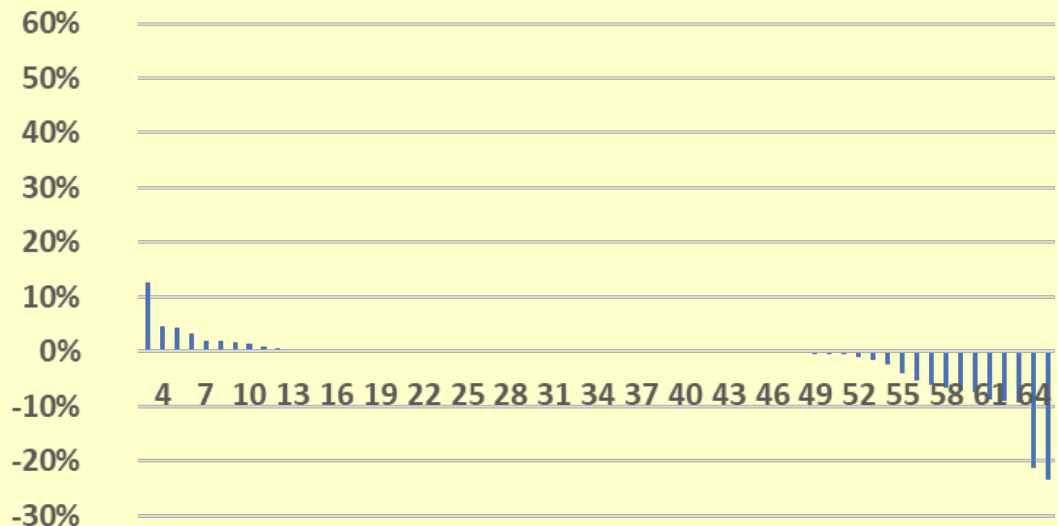
## UNPAVED ROADS

- 6/2019: 19,098 miles
- 4/2020: 18,874 miles
- **Loss of 224 miles, or 1%**

MILES of Unpaved Change 6/2019 to 4/2020



% CHANGE in Unpaved Miles 6/2019 to 4/2020



# DGLVR Unpaved Road Assessment Update

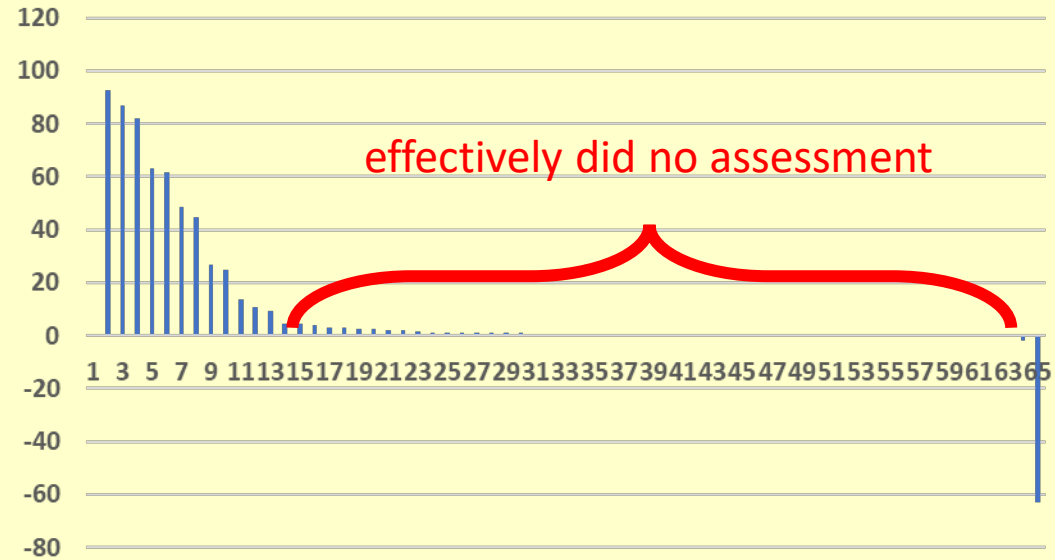
## Assessment Status:

6/2019  
through  
4/2020

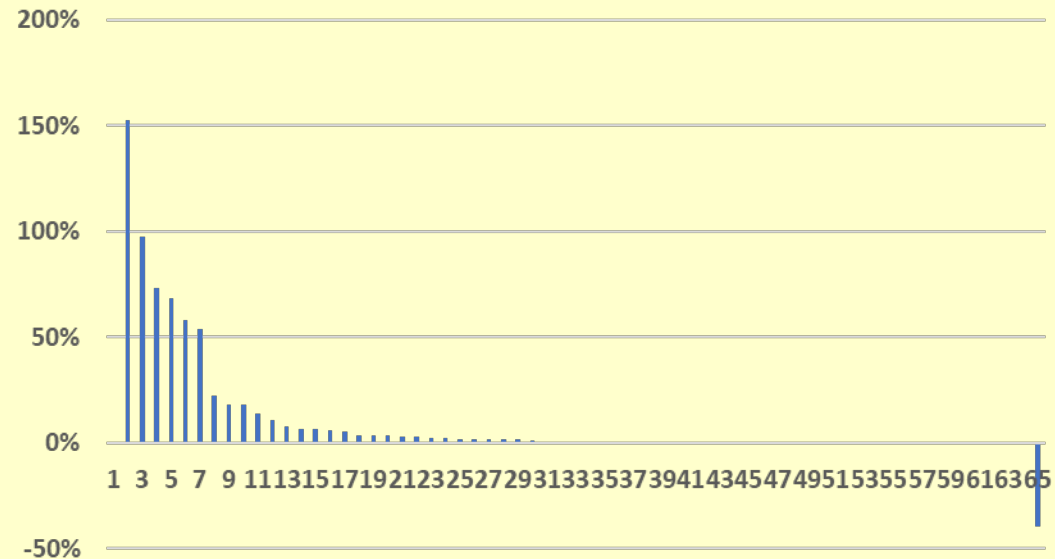
## WORKSITES

- 6/2019: 7,261 miles
- 4/2020: 7,797 miles
- Gain of 536 miles, or 7%

MILES of Worksites Change 6/2019 to 4/2020



% CHANGE in Worksites Miles 6/2019 to 4/2020



## What CDs are finding in general:

- Overall decrease in unpaved roads due to paving
- Overall increase in worksites on remaining roads
  - Many old sites were too small
  - Many assessments were not thorough
  - Everyone has much more experience now



**Purpose:** share update and allow discussion on unpaved road assessments

### **Agenda:**

- Assessment Overview and Resources
- Assessment Status
- **Assessing from Quarantine: lessons from Juniata County**



JUNIATA COUNTY  
CONSERVATION DISTRICT

# Dirt and Gravel Road Assessment Ideas in the Time of Covid-19

Chris Snyder – District Manager

Brent Leach – Resource Conservation Technician

Ben Kerstetter – Resource Conservation Technician



# What Works for Us

- Receive Approval to perform Assessment during Covid-19
  - (i.e. County Commissioners, Dist. Manager, Conservation District Board, etc.)
- Refresh on Assessment Training
- Develop a plan for assessing unpaved roads
- Print maps, County and Center GIS Viewer
- Drive Roads (Separately)
- E-mail and Phone Communication
- Update GIS - paved or unpaved? Potential Worksite?



# Challenges

- Logistical – Shifting Strategies, Two vehicles, where to park?  
Maintaining social distancing
- Scheduling – Two people on the same schedule during this time is extremely difficult
- Staying organized – which roads have been assessed? What needs updated in GIS?
- Do the best we can until June 15<sup>th</sup>, we will get to the remaining roads in the fall/winter





JUNIATA COUNTY  
CONSERVATION DISTRICT

# Planning

GIS to determine Roads



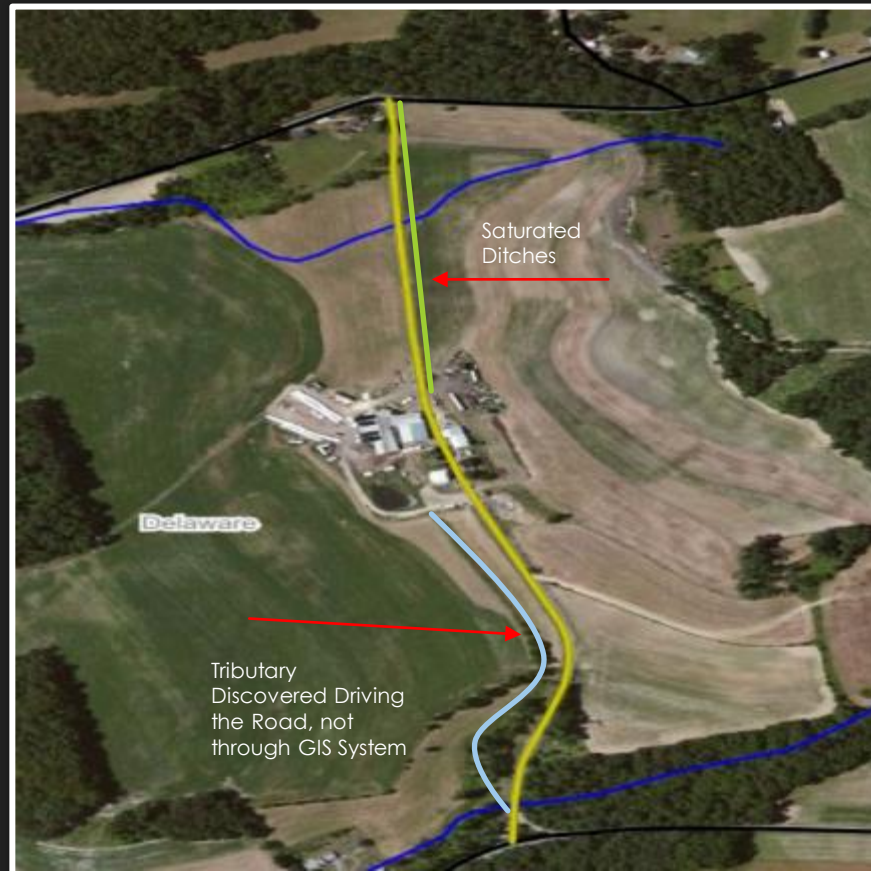
Large Township Maps for Field use





# Potential Site

- This site was added as a potential site after Brent and I each drove the road and talked about it





# Field Photos



# Field Photos



# Lesson's Learned

- Various streams layers exist, all are necessary for assessment
  - (Center GIS Streams, EMAP, County Tributary Mapping, etc.)
- Electronic mapping (GIS) is good for a reference and starting point
- Field Verification is critical to reassessment, cannot do electronically with accuracy
- Don't be afraid to get wet - rainy days are best to view road conditions
- Email, text, and phone calls have been used heavily to relay information and update GIS with new assessment



JUNIATA COUNTY  
CONSERVATION DISTRICT

# Questions?

